

MONTHLY MEMBERSHIP PROGRESS REPORT

LOCATION AUSTRALIA

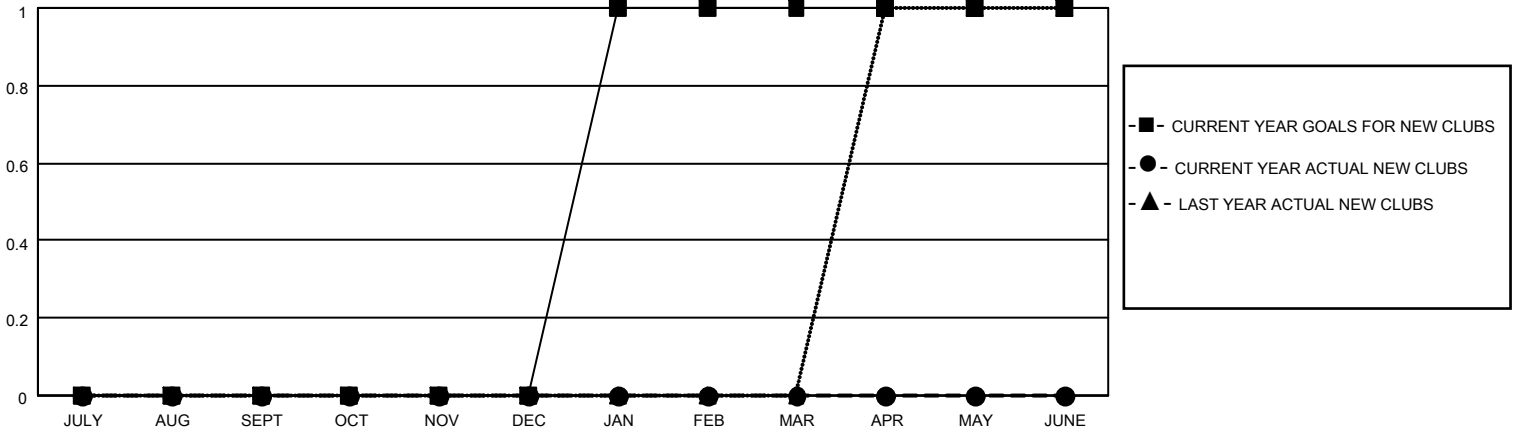
District 201W2

Results as of: 4/30/2022

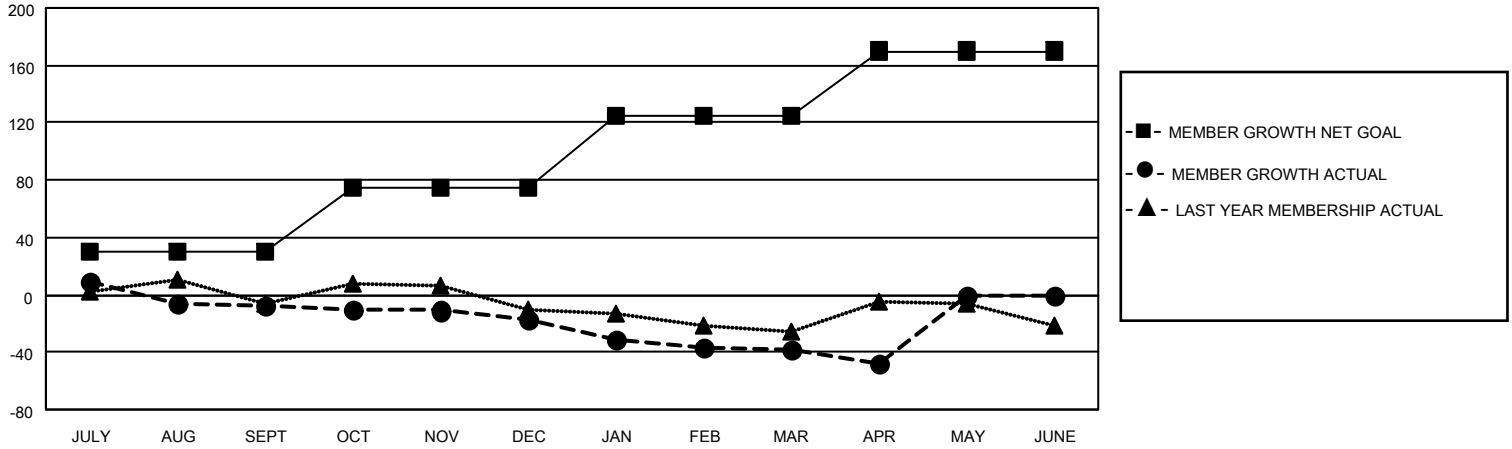
Clubs			
RESULTS FOR 2021-2022			
QUARTER	NEW CLUB GOAL	NEW CLUBS	DROPPED CLUBS
JULY/AUG/SEPT	0	0	0
OCT/NOV/DEC	0	0	0
JAN/FEB/MAR	1	0	0
APR/MAY/JUNE	0	0	0

Members			
RESULTS FOR 2021-2022			
QUARTER	MEMBER GROWTH NET GOAL	MEMBER GROWTH ACTUAL	DROPPED MEMBERS ACTUAL (including transfers)
JULY/AUG/SEPT	30	43	44
OCT/NOV/DEC	45	41	47
JAN/FEB/MAR	50	24	41
APR/MAY/JUNE	45	9	19

GOALS AND ACTUAL NEW CLUBS CUMULATIVE



GOALS AND ACTUAL MEMBERS CUMULATIVE



DROPPED CLUBS: 0

37 CLUBS OF 62 ADDED 1 OR MORE NEW MEMBERS

GENDER DISTRIBUTION

MALE	857 (65.72%)
FEMALE	447 (34.28%)
NON BINARY	0 (0.00%)
PREFER NOT TO ANSWER	0 (0.00%)

DROPPED MEMBERS

[CLICK HERE FOR CUMULATIVE MEMBERSHIP DATA](#)

DECEASED	15
CLUB CANCELLED	0
OTHER	136
TOTAL	151

TOTAL FAMILY UNIT MEMBERS 197

FAMILY MEMBERS PAYING HALF DUES 100